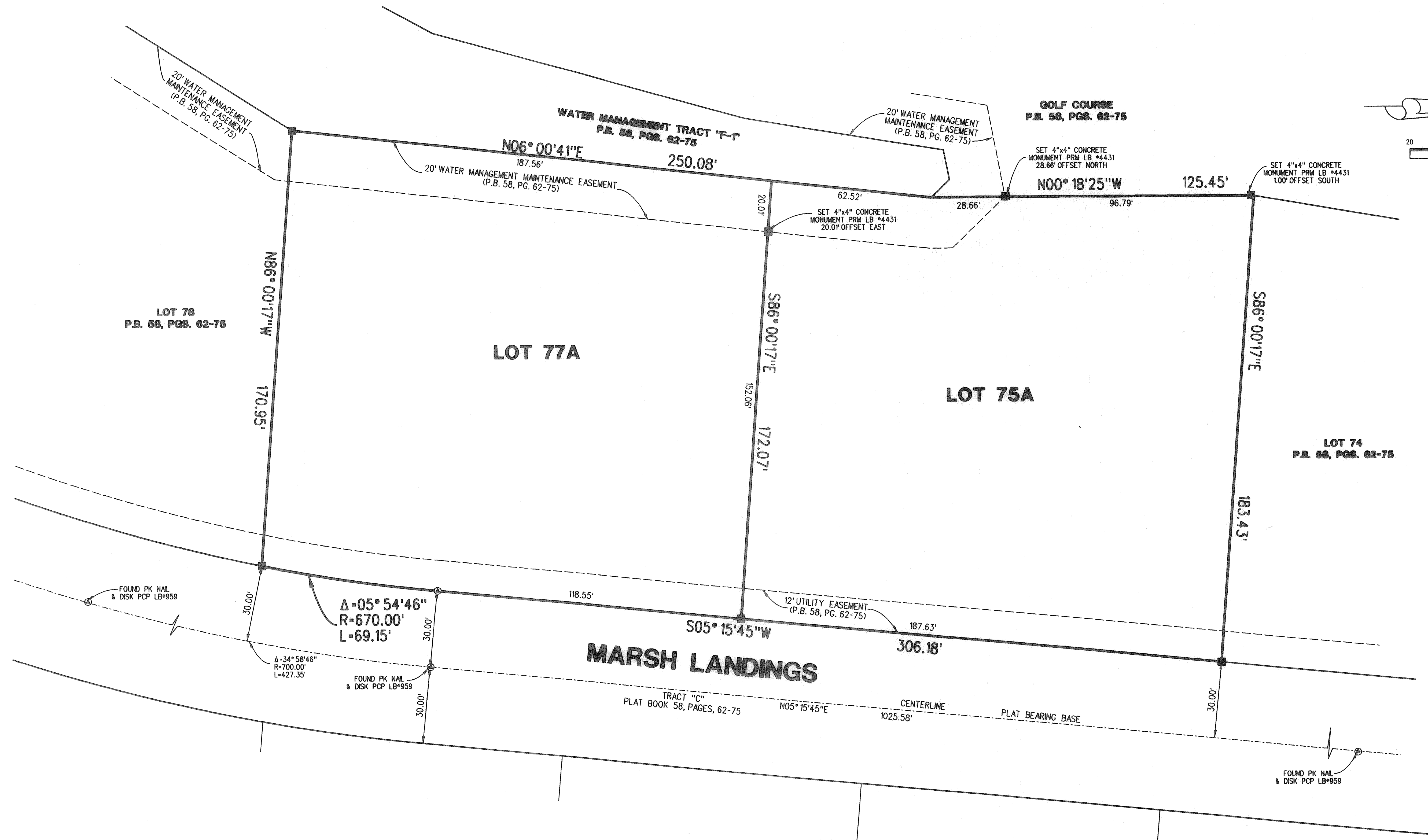
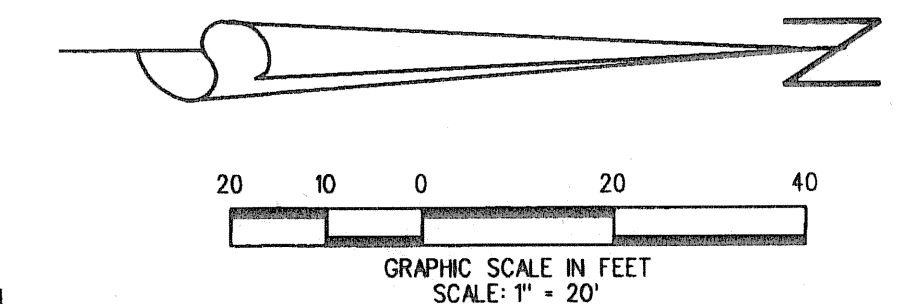


OLD MARSH GOLF CLUB REPLAT No. 18

SITUATE IN SECTION 28, TOWNSHIP 41 SOUTH, RANGE 42 EAST, BEING A REPLAT OF LOTS 75, 76 AND 77, OLD MARSH GOLF CLUB, A PLANNED UNIT DEVELOPMENT, AS RECORDED IN PLAT BOOK 58, PAGES 62 THROUGH 75, PUBLIC RECORDS OF PALM BEACH COUNTY, FLORIDA

SEPTEMBER, 2008

SHEET 2 OF 2



LIDBERG LAND SURVEYING, INC.		C/D: KAUST \ 284M2 \ 58-62 \ 07-150-306 \ 07-150-306.DGN	
675 West Indiantown Road, Suite 200, Jupiter, Florida 33458 TEL. 561-746-8454		REF.	
FLD.	FB.	PG.	JOB 07-150-306
OFF. L.J.C.			DATE
CKD. D.C.L.	SHEET 2	OF 2	DWG. D07-150P